

STEWART'S CONSTRUCTION 2025

STEWARTSEQUIP.COM

ERIN 519-833-9616
COOKSTOWN 705-458-0871
STAYNER 705-428-3132

f X i
FOLLOW US

Table Of Contents

Kubota Track Carriers	3
Kubota Sub Compact TLB	3
Kubota Skid Steers & CTL's	4-5
New Holland Construction	6-7
Kubota TLB's	8
Kubota Wheel Loaders	9
Kubota Excavators	10 - 12
Kubota RTV's	13
70 Year Anniversary	14 - 15
Skid Steer Attachments	16 - 19
Excavator Attachments	20 - 22
Soil Compaction	23
Concrete Saws	24
Generators & Water Pumps	25
Trailers	26
Used	27

DOWNLOAD THE myKubota APP

KUBOTANOW TELEMATICS
LETS KUBOTA OWNERS
EASILY MONITOR AND TRACK
EQUIPMENT – ALL THROUGH
THE myKubota APP



KEY FEATURES

YOUR EQUIPMENT - Select and save your Kubota to easily access resources like manuals, service intervals or guides.

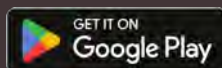
OPERATOR MANUALS - Review your equipment's operator manuals right from your phone.

MAINTENANCE GUIDES - Access step-by-step instructions for basic maintenance on select equipment.

KUBOTANOW TELEMATICS - Monitor your equipment, create geofences and keep an eye on your Kubota equipment's health and location right from your mobile device.

AVAILABLE ON iOS & ANDROID - View and access equipment information and alerts remotely through your iOS or Android device via the myKubota app.

COMPATIBLE ATTACHMENTS - Find Kubota performance matched attachments to go along with your power unit.





Track Carriers

KG120HC-4S



- 14.5 Hp Track Carrier
- 2,646 lb load capacity
- Hydrostatic transmission

\$30,042 MSRP

Finance/Lease:

\$3,162 Down (+ HST)

\$746^{.67} per mo. (+ HST)

@ 0% for 36 mos.

KC70-4



- 5.6 Hp Rubber Track Carrier
- 1,543 lb load capacity
- Hydraulic dump box

\$18,359 MSRP

Finance/Lease:

\$1,919 Down (+ HST)

\$456^{.67} per mo. (+ HST)

@ 0% for 36 mos.

Sub Compact Tractor Loader Backhoe

BX23S



0% FOR 72 MONTHS FINANCING OAC*

\$34,574 MSRP

Finance/Lease:

\$3,457^{.40} Down (+ HST)

\$432^{.17} per mo. (+ HST)

@ 0% for 72 mos.

- Horsepower (Rated Engine): 21.6
- Horsepower (PTO): 17.7
- 4WD
- Rear PTO (540rpm)
- Mid PTO (2500rpm)
- R14 tires

Equip the BX with a wide range of optional specialized attachments for added precision and efficiency.



BB1254 Box Scraper
MSRP **\$1,465**



PL1242 Pallet Forks
MSRP **\$1,023**



PD10 Auger w/ 9" bit
MSRP **\$2,327**



RTR0550 Roto-tiller
MSRP **\$4,642**



RB0560 Rear Blade
MSRP **\$1,019**



RCR1248 Rotary Cutter
MSRP **\$2,732**



FDR1648 Finishing Mower
MSRP **\$4,844**

*Products/features may not be exactly as shown.
ALL FINANCING OAC. Limited time offer.



Kubota

Skid Steers

SSV65P

- Cab, air, heat, radio
- High flow hydraulics
- Hydraulic coupler
- 10x16.5 tires
- Pilot controls
- Ride control
- Self-level
- Kubota Telematics

\$78,710

MSRP

0% FOR 60 MONTHS FINANCING OAC



Engine gross horsepower: 64.0 hp (47.7 kW)
 Rated operating capacity: 1,950 lbs. (885 kg)
 Operating weight: 7,319 lbs. (3,320 kg)

Finance/Lease:

\$11,510 Down (+ HST)

\$1,120 per mo. (+ HST)

@ 0% for 60 mos.

SSV75P

- Cab, air, heat, radio
- High flow hydraulics
- Hydraulic coupler
- Ride control
- Self-level
- Pilot control
- 12x16.5 tires
- Kubota Telematics

\$88,997

MSRP

0% FOR 60 MONTHS FINANCING OAC



Engine gross horsepower: 74.3 hp (55.4 kW)
 Rated operating capacity: 2,690 lbs. (1,220 kg)
 Operating weight: 8,466 lbs. (3,840 kg)

Finance/Lease:

\$13,397 Down (+ HST)

\$1,260 per mo. (+ HST)

@ 0% for 60 mos.

Stand-on Compact Track Loader

SCL1000

- 24.8 Hp Turbo Kubota Engine
- 36" Overall Width
- 15G.P.M. Auxillary Hydraulics
- 4.9MPH Travel Speed

\$52,244

MSRP

0% FOR 48 MONTHS FINANCING OAC



Engine gross horsepower: 24.8 hp (18.5 kW)
 Rated operating capacity: 1,000 lbs. (453 kg)
 Operating weight: 3,035 lbs. (1,376 kg)

Finance/Lease:

\$5,444 Down (+ HST)

\$975 per mo. (+ HST)

@ 0% for 48 mos.

*Products/features may not be exactly as shown.
 ALL FINANCING OAC. Limited time offer.

Compact Track Loaders



SVL65-2HFC

- High flow hydraulics
- Cab, air, heat, radio
- Hydraulic coupler
- Kubota Telematics
- Reverse camera
- Block heater

\$94,931

MSRP

0% FOR 72
MONTHS FINANCING OAC



Engine gross horsepower: 68.4 HP (51.0 kW)
Rated operating capacity: 2,100 lbs (953 kg)
Bucket breakout force: 4,614 lbf (2,093 kg)

Finance/Lease:

\$10,931 Down (+ HST)

\$1,166⁻⁶⁷ per mo. (+ HST)

@ 0% for 72 mos.

SVL75-3

- Cab, air, heat, radio
- Hydraulic coupler
- 15.8" Tracks
- High flow
- Kubota Telematics
- Reverse camera
- Block heater

\$107,431

MSRP

0% FOR 60
MONTHS FINANCING OAC



Engine gross horsepower: 74.3 HP (55.4 kW)
Rated operating capacity: 2,490 lbs (1,129 kg)
Bucket breakout force: 6,191 lbf (2,808 kg)

Finance/Lease:

\$11,431 Down (+ HST)

\$1,600 per mo. (+ HST)

@ 0% for 60 mos.

NEW SVL97-3

- Cab, air, heat, radio
- Hydraulic coupler
- 17.7" Tracks
- High Flow
- Kubota Telematics
- Reverse camera
- Block heater

\$129,080

MSRP

0% FOR 60
MONTHS FINANCING OAC



Engine gross horsepower: 96.4 HP (71.9 kW)
Rated operating capacity: 3,200 lbs (1,451 kg)
Bucket breakout force: 7,961 lbf (3,611 kg)

Finance/Lease:

\$13,880 Down (+ HST)

\$1,920 per mo. (+ HST)

@ 0% for 60 mos.

***Arriving summer 2025**

Limited quantities of SVL97-2 units are still available! Call now to secure a unit and save some money. Call for a quote today!

*Products/features may not be exactly as shown.
ALL FINANCING OAC. Limited time offer.



Skid Steer Loaders

L320

- 72" Low Profile Bucket
- 2,000 lb. Lift Capacity
- 2 Speed
- Hydraulic Coupler
- Mechanical H pattern
- Cab/Heat/Air
- Vertical lift
- Front Electrics



\$77,300

CASH
+HST

OR

Finance:
\$88,500 (+ HST)
 \$22,005.⁰⁰ Down
 Balance = \$78,000

\$1,300 per mo. (+ HST)
@ 0% for 60 mos.

L328

- 78" Low Profile Bucket
- 2,800 lb. Lift Capacity
- 2 Speed EH controls
- Hydraulic Coupler
- Highflow plus pack
- Cab/Heat/Air
- 12x16.5 Tires
- Front aux hyd & Electrics



\$88,700

CASH
+HST

OR

Finance:
\$102,700 (+ HST)
 \$26,051.⁰⁰ Down
 Balance = \$90,000

\$1,500 per mo. (+ HST)
@ 0% for 60 mos.

We offer a full line of Authorized Parts and Service for your New Holland Construction equipment.

W80C

- Deluxe Cab/Heat/Air
- hs Limited Slip Differentials
- Auxiliary Hydraulics
- Return to Dig
- 1.44 cu yd Bucket
- Ride Control
- Beacon Light
- 360/80R20 Nokian SnowTires
- Counter Weight



Compact Wheel Loader

\$163,600

CASH
+HST

OR

Finance:
\$177,000 (+ HST)
 \$30,000.⁰⁰ Down
 Balance = \$170,010

\$2,833.⁵⁰ per mo. (+ HST)
@ 0% for 60 mos.



Mini Track Loader

C314

\$54,000

CASH + HST

OR

Finance:

\$65,000 (+ HST)

\$13,450⁰⁰ Down

Balance = \$60,000

\$1,000 per mo. (+ HST)

@ 0% for 60 mos.

NEW



- 1,416 Lb. Lift capacity
- 36" Bucket
- Front electrics
- 24.8hp Kubota diesel
- Hydrostatic

Compact Track Loaders

C327

IN-STOCK

\$95,000 CASH + HST

OR

Finance:

\$103,000 (+ HST)

\$26,390⁰⁰ Down

Balance = \$90,000

\$1,500 per mo. (+ HST)

@ 0% for 60 mos.

- 72" Bucket & hydraulic coupler
- 2,700 Lb. Lift capacity
- Cab/heat/air
- Track width: 67" with 12.6" Tracks
- E-H controls & performance package
- 2 Speed



C332

\$102,800

CASH + HST

OR

Finance:

\$121,050 (+ HST)

\$28,786⁰⁰ Down

Balance = \$108,000

\$1,800 per mo. (+ HST)

@ 0% for 60 mos.

- 78" Bucket with Bolt on Cutting Edge
- 3,200 Lb. Lift Capacity
- Cab/Heat/Air
- E-H controls (ISO/H-Pattern)
- Hydraulic Coupler
- 2 Speed



C362

\$163,500

CASH + HST

OR

Finance:

\$184,500 (+ HST)

\$28,485⁰⁰ Down

Balance = \$180,000

\$3,000 per mo. (+ HST)

@ 0% for 60 mos.

IN-STOCK

- 84" Bucket with bolt on cutting edge
- 6,200 Lb. Lift capacity
- Cab w/ demo door/heat/air & air seat
- E-H controls
- Enhanced high flow package
- Hydraulic coupler
- 2 Speed



*Products/features may not be exactly as shown.
ALL FINANCING OAC. Limited time offer.



Tractor Loader Backhoes

B26TLBV

0% FOR 48 MONTHS FINANCING OAC

\$60,975 MSRP



Finance/Lease:

\$6,255 Down (+ HST)

\$1,140 per mo. (+ HST)

@ 0% for 48 mos.

Horsepower (Rated Engine): 24.3
Horsepower (PTO): 19.5
4WD
3 Range Hydrostatic Transmission
7'0" backhoe digging depth
16" pin on bucket

L47TLBV

0% FOR 48 MONTHS FINANCING OAC

\$90,024 MSRP



Finance/Lease:

\$9,864 Down (+ HST)

\$1,670 per mo. (+ HST)

@ 0% for 48 mos.

Horsepower (Rated Engine): 47.1
Horsepower (PTO): 33.0
4WD
6 Range HST-PLUS
Hydrostatic Transmission
10'1" backhoe digging depth
18" pin on bucket

M62TLBV

0% FOR 48 MONTHS FINANCING OAC

\$118,061 MSRP



Finance/Lease:

\$12,581 Down (+ HST)

\$2,197.⁵⁰ per mo. (+ HST)

@ 0% for 48 mos.

Horsepower (Rated Engine): 63
Horsepower (PTO): 46.0
4WD
Hydrostatic Transmission
10'1" backhoe digging depth
24" trenching bucket
84" loader bucket
Hydraulic thumb

Keep your Kubota equipment operating at peak performance year after year with Kubota Genuine Parts!

*Products/features may not be exactly as shown.
ALL FINANCING OAC. Limited time offer.

Compact Wheel Loaders



R430

0% FOR 48 MONTHS FINANCING OAC*

\$90,355 MSRP

Finance/Lease:

\$9,355 Down (+ HST)

\$1,687⁵⁰ per mo. (+ HST)

@ 0% for 48 mos.

Base unit pricing
Z-bar linkage
Cab/heat/air
2 year warranty



Operating Weight: CANOPY/CAB
7,558 lbs. (3,519 kg) / 8,232 lbs. (3,734 kg)
Horsepower: 47.6 (35.5 kW)

R540

0% FOR 48 MONTHS FINANCING OAC*

\$112,923 MSRP

Finance/Lease:

\$13,923 Down (+ HST)

\$2,062⁵⁰ per mo. (+ HST)

@ 0% for 48 mos.

Base unit pricing
Z-bar linkage
Cab/heat/air
2 year warranty



Operating Weight: CANOPY/CAB
9,888 lbs. (4,485 kg) / 10,285 lbs. (4,665 kg)
Horsepower: 51.0 (38.0 kW) / 2,400 rpm

R640

0% FOR 48 MONTHS FINANCING OAC*

\$135,006 MSRP

Finance/Lease:

\$16,206 Down (+ HST)

\$2,475 per mo. (+ HST)

@ 0% for 48 mos.

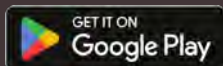
Base unit pricing
Z-bar linkage
Cab/heat/air
2 year warranty



Operating Weight: CANOPY/CAB
11,177 lbs. (5,070 kg) / 11,563 lbs. (5,245 kg)
Horsepower: 64.4 (48.0 kW) / 2,400 rpm

Stay Connected with Kubota Telematics & the MyKubota App

THE myKubota APP IS A COMPANION FOR KUBOTA EQUIPMENT OWNERS THAT GIVES YOU THE ABILITY TO PROACTIVELY MAINTAIN AND CARE FOR YOUR EQUIPMENT



Scan this code with your smart phone to download the myKubota app today!



*Products/features may not be exactly as shown.
ALL FINANCING OAC. Limited time offer.



0-2 Ton Mini-Excavators

KO08-5

\$34,456 MSRP

Finance/Lease:

\$3,445^{.60} Down (+ HST)

\$516^{.84} per mo. (+ HST)

@ 0% for 60 mos.

Dig Depth: 5'8"
Auxiliary flow: 5.6 gpm
Bucket breakout: 2,200 lbf
ROPS

1.0 metric ton
10.1 Hp

0% FOR 60 MONTHS FINANCING OAC



Base unit pricing - attachments extra

U10-5

\$37,599 MSRP

Finance/Lease:

\$3,759^{.90} Down (+ HST)

\$563^{.98} per mo. (+ HST)

@ 0% for 60 mos.

Dig Depth: 5'11"
Auxiliary flow: 5.5 gpm
Bucket Breakout: 2,337 lbf
ROPS

1.2 metric ton
10.1 Hp

0% FOR 60 MONTHS FINANCING OAC



Base unit pricing - attachments extra

NEW U17-5

\$44,624 MSRP

Finance/Lease:

\$4,462^{.40} Down (+ HST)

\$669^{.36} per mo. (+ HST)

@ 0% for 60 mos.

Dig Depth: 7'6"
Bucket breakout: 3,417 lbf
Auxiliary flow: 7.3 gpm
ROPS

1.7 metric ton
16.1 Hp

0% FOR 60 MONTHS FINANCING OAC



Base unit pricing - attachments extra

***Arriving spring/summer 2025**

Limited quantities of U17-4 units are still available! Call now to secure a unit and save some money. Call for a quote today!

KX018-4H

\$49,382 MSRP

Finance/Lease:

\$4,938^{.20} Down (+ HST)

\$740^{.73} per mo. (+ HST)

@ 0% for 60 mos.

Dig depth: 7'10"
Auxiliary flow: 7.4 gpm
Bucket breakout: 3,594 lbf
ROPS

1.8 metric ton
16.1 Hp

0% FOR 60 MONTHS FINANCING OAC



18" Quick Attach Bucket Included

Minimum Tail Swing Excavators



U27-4HG

\$57,121 MSRP

Finance/Lease:

\$5,712¹⁰ Down (+ HST)

\$856⁸² per mo. (+ HST)

@ 0% for 60 mos.

Dig Depth: 9'5"
Aux flow: 12.7 gpm
Bucket breakout: 7,014 lbf
ROPS

1.8 metric ton
20.8 Hp

0% FOR 60 MONTHS FINANCING OAC



Base unit pricing - attachments extra

U35-4HG

\$70,161 MSRP

Finance/Lease:

\$7,016¹⁰ Down (+ HST)

\$1,054⁴⁸ per mo. (+ HST)

@ 0% for 60 mos.

Dig Depth: 9'9"
Aux flow: 15.8 gpm
Bucket breakout: 6,318 lbf
ROPS

3.5 metric ton
23.9 Hp

0% FOR 60 MONTHS FINANCING OAC



Base unit pricing - attachments extra

U48-5

\$107,861 MSRP

Finance/Lease:

\$10,786¹⁰ Down (+ HST)

\$1,617³⁹ per mo. (+ HST)

@ 0% for 60 mos.

Dig Depth: 10'8"
Auxiliary flow: 17.2 gpm
Bucket Breakout: 9,304 lbf
Cab/heat/air

4.8 metric ton
40.5 Hp

0% FOR 60 MONTHS FINANCING OAC



Base unit pricing - attachments extra

U55-5G

\$115,999 MSRP

Finance/Lease:

\$11,599⁹⁰ Down (+ HST)

\$1,739⁹⁹ per mo. (+ HST)

@ 0% for 60 mos.

Dig Depth: 11'11"
Auxiliary flow: 19.8 gpm
Bucket Breakout: 11,177 lbf
Cab/heat/air

5.5 metric ton
47.6 Hp

0% FOR 60 MONTHS FINANCING OAC



Base unit pricing - attachments extra

*Products/features may not be exactly as shown.
ALL FINANCING OAC. Limited time offer.



Excavators

KX033-4G

\$80,994 MSRP

Finance/Lease:

\$8,099⁴⁰ Down (+ HST)

\$1,214⁹¹ per mo. (+ HST)

@ 0% for 60 mos.

Dig Depth: 10'6"

Auxiliary flow: 15.8 gpm

Bucket breakout: 8,138 lbf

Includes cab, heat, air, rubber tracks.

0% FOR 60
MONTHS FINANCING OAC



3.3 ton
24.8 Hp

Base unit pricing - attachments extra

NEW KX040-5

\$81,157 MSRP

Finance/Lease:

\$8,115⁷⁰ Down (+ HST)

\$1,217³⁶ per mo. (+ HST)

@ 0% for 60 mos.

Dig Depth: 11'2.7"

Auxiliary flow: 17.2 gpm

Bucket breakout: 9,535 lbf

Includes cab, heat, air, rubber tracks, rear view camera.

0% FOR 60
MONTHS FINANCING OAC



4.6 ton
40.3 Hp

Base unit pricing - attachments extra

KX057-5G

\$122,867 MSRP

Finance/Lease:

\$12,286⁷⁰ Down (+ HST)

\$1,843⁰⁰ per mo. (+ HST)

@ 0% for 60 mos.

Dig Depth: 12'8"

Auxiliary flow: 19.8/9.8 gpm

Bucket breakout: 11,177 lbf

Includes cab, heat, air, rubber tracks, rear view camera.

0% FOR 60
MONTHS FINANCING OAC



5.7 ton
47.6 Hp

Base unit pricing - attachments extra

KX080-5

\$171,998 MSRP

Finance/Lease:

\$17,199⁸⁰ Down (+ HST)

\$2,579⁹⁷ per mo. (+ HST)

@ 0% for 60 mos.

Dig Depth: 15'1"

Auxiliary flow: 26.4/17.6 gpm

Bucket breakout: 14,660 lbf

Includes cab, heat, air, rubber tracks, rear view camera.

0% FOR 60
MONTHS FINANCING OAC



8.4 ton
66.6 Hp

Base unit pricing - attachments extra

The -5 Models in the 4T range & up include rear camera with large LCD digital panel, keyless start & improved ergonomics. Call for more information!

Utility Vehicles



RTV520G-HC

\$15,368 MSRP

0% FOR 24 MONTHS FINANCING OAC

Finance/Lease:

\$1,536.80 Down (+ HST)

\$576.30 per mo. (+ HST)

@ 0% for 24 mos.

Base unit pricing - options extra



17.4 hp gas,
4WD VHT
Transmission,
ROPS,
HD worksite
tires.

More
Options
Available!

RTV-X Standard

\$24,888 MSRP

0% FOR 24 MONTHS FINANCING OAC

Finance/Lease:

\$2,488.80 Down (+ HST)

\$933.30 per mo. (+ HST)

@ 0% for 24 mos.

Base unit pricing - options extra



24.8 hp diesel,
4WD VHT-X
Transmission,
ROPS,
HDMP tires,
Traditional
bed.

New Pro-
Konvert
bed
Available!

RTV-X1100C

\$34,090 MSRP

0% FOR 24 MONTHS FINANCING OAC

Finance/Lease:

\$3,409.00 Down (+ HST)

\$1,278.37 per mo. (+ HST)

@ 0% for 24 mos.

Base unit pricing - options extra



24.8 hp diesel,
4WD VHT-X
Transmission,
factory cab
w/radio,
heat/AC,
HD worksite
tires.

More Options Available!

RTV-X1130

\$27,773 MSRP

0% FOR 24 MONTHS FINANCING OAC

Finance/Lease:

\$2,777.30 Down (+ HST)

\$1,041.49 per mo. (+ HST)

@ 0% for 48 mos.

Base unit pricing - options extra



24.8 hp diesel,
4WD VHT-X
Transmission,
HDMP tires,
Long ProKonvert
bed,
ROPS.

More
Options
Available!

NEW RTV-X CREW

\$28,192 MSRP

0% FOR 24 MONTHS FINANCING OAC

Finance/Lease:

\$2,819.20 Down (+ HST)

\$1,057.20 per mo. (+ HST)

@ 0% for 48 mos.

Base unit pricing - options extra



24.8 hp diesel,
4WD VHT-X
Transmission,
ROPS,
K-Vertible
bed
HD
worksite
tires.

More Options Available!

Ask about our Tailor-made financing plans!

Let Stewart's make a financing plan to fit your budget.

*Products/features may not be exactly as shown.
ALL FINANCING OAC. Limited time offer.



Seventy Years of Excellence: A Legacy of Quality and Reliability

As we reflect on our 70-year journey, we're reminded of the countless hours, hard work and dedication that have gone into building our farm equipment dealership. Through the decades, our commitment to serving our community has remained unwavering, and we're proud to have partnered with some of the most reputable brands in the industry - none more iconic than Kubota.



At our dealership, we're more than just a sales floor - we're a trusted partner, dedicated to providing exceptional service, expert advice, and genuine support to our customers. We take pride in knowing that the equipment we sell will be put to work on local farms, construction sites, and landscape projects, contributing to the growth and development of our community.

As we celebrate this milestone, we want to express our gratitude to our loyal customers, partners, and the entire Kubota family for their unwavering support. We're excited to continue forging strong relationships, sharing our expertise and delivering top-notch solutions that meet the evolving needs of our customers.

Whether it's the rugged and versatile Kubota tractors, the high-performance excavators, or the precision-engineered lawn and garden equipment, we've seen how Kubota's innovative designs and cutting-edge technology have transformed the way our customers work. From tilling the soil to shaping the landscape, Kubota's equipment has been instrumental in helping our clients achieve their goals and build their businesses.



Kubota's constant focus on quality, innovation and customer satisfaction aligns perfectly with our own values. For generations, Kubota's heavy-duty equipment has been the go-to choice for farmers, landscapers, and construction professionals who demand the best. We've witnessed firsthand the reliability, performance and fuel efficiency that Kubota machines deliver, making them an integral part of our customers' success stories.

Here's to many more years of growth, innovation, and success – together!

Kubota Celebrates 50 Years of Growth and Excellence in Canada. Half-century of continued success is a testament to the company's unwavering dedication to product innovation and the people and places it serves





Skid Steer & Compact Track Loader Attachments

Tilt Attachment

- Mounts between skidsteers and buckets with universal hitch
- Tilts 18° left and right
- Approx. Weight 425 lbs.
- Great for Landscapers
- Helps to change grade
- 5,500 lb capacity



\$4,175 MSRP

HD 6 Way Dirt Blade

- Heavy duty construction with double angle cylinders
- Reversible cutting edge
- 24" High mouldboard
- Power tilt for side leveling (blade oscillates 5 degrees either way) c/w electric selector valve
- Hose kit, Diverter valve and wire kit included



**84" w/Power Tilt
\$6,140 MSRP**

Low Profile Skid Steer Bucket

- Lower back and longer base enables operator to see cutting edge of bucket
- Extra rollback for sloppy manure
- 32" Deep, 19" High
- Made of same material as standard bucket



**Regular Duty 66"
MSRP \$1,230**

**Regular Duty 72"
MSRP \$1,270**

**Heavy Duty 66"
\$1,660 MSRP**

**Heavy Duty 72"
\$1,745 MSRP**

Low Profile Bucket With Digging Teeth

- 3/16" Bucket body w/1/4" Endplates
- 3/4" X 4 Bevelled cutting edge
- Reinforced top lip
- 32" Deep X 19" High
- Lower back and longer base enables operator to see cutting edge of bucket
- Sizes available from 48" - 84"



**Regular Duty 78"
\$1,875 MSRP**

Canadian Made



Great Quality



TS 48 Tree Spade

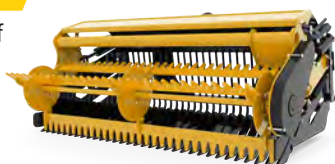
- Ideal for transplanting trees and shrubbery
- Scoop made from 1/4" material
- 33" Wide
- 48" Deep
- Approx. Weight: 365 lbs.



Skid Steer Mount
\$1,985 MSRP

Stone Fork (Landscape) with Power Rake

- Ideal for picking up both windrows of stones and loose stones in soil being prepared for seed beds
- 1 3/4" Tine spacing
- Points are 1/2" thick, 400 Brinell high tensile steel
- 32" High, 35 1/2" Deep
- Wire Kit included
- Hose Kit Included / spring hose mount kit



84" w/Skid Steer Mount Kit
\$10,365 MSRP

Debris Grapple Fork

- Designed to pick-up brush and other debris while leaving the dirt
- Two independent grapples
- Cylinders completely protected from debris
- Comes with cylinders
- 6" tine centres
- Hose Kit Included
- Spring hose mount kit included



72" \$5,125 MSRP

Heavy Duty Pallet Forks

- 48" long 1-1/2" X 4" class II hook type solid fork lift tines
- 5,500 lbs capacity @24" L.C.
- C/w guard
- 50" wide carriage
- Sliding adjustable
- Tines can be locked in any position



\$1,405 MSRP

Stewart's offers a full line of competitively priced Skid Steer attachments from Horst Welding. We have many items in stock and can quickly order in anything you need.

*Products/features may not be exactly as shown.



Skid Steer & Compact Track Loader Attachments

Augers

For light, moderate, difficult ground conditions, compacted soils, heavy clay, asphalt, frozen ground, and fracturable rock. With: 2-9/16" round or 2" hex

X1975
2" hex
#86977900
12" HDC Auger
#92189077



\$6,960
MSRP

Vibratory Rollers (Padfoot Drum)

Compact sand, gravel or soil in preparation for concrete or asphalt surfacing. Width: 48", 66", 73", 84" #92268529



73"
\$15,100 MSRP

Concrete Claw

Demolition, construction, road maintenance Specifications: Impact Class 250-825 ft/lb #87045466



\$4,182 MSRP

Hydraulic Hammers

Demolition, construction, road maintenance Specifications: Impact Class 250-825 ft/lb #47450982



Starting From
\$12,465 MSRP

Brooms - Pick up

Street cleaning and parking lot, road, bridge, jobsite cleanup, and snow removal. Width: 60", 72", 84" #87553105



72" **\$14,100** MSRP

Brooms - Angle

Street cleaning and parking lot, road, bridge, jobsite cleanup, and snow removal. Width: 72", 84", 96", 108" #48159717



72" hyd angle
(14 -pin plug-in)
\$13,700 MSRP



*Products/features may not be exactly as shown.

SG26 Stump Grinder

Grinds stumps up to 12" below ground level. Floating guard contains chips
Std. Flow
#87050302



\$15,300 MSRP

Preparator Landscape Rakes

Conditions the soil with scarifying action while picking up debris.
Width: 66" & 76"
#9863808



76"

\$19,800 MSRP

Harley Power Box Rake

Ideal for seedbed preparation, landscaping, trench restoration.
Width:
72", 84", 90"
#51667892



72" hyd angle

\$21,100 MSRP

Ambusher Rotary Cutter

For small trees and brush up to 4" in diameter.
Width: 60" & 72" Std. Flow required.
#9863737



72" **\$14,600 MSRP**

Cold Planers, High flow

For heavy duty planing jobs, including milling transition and repair areas, frost heaves and expansion joints.
Width: 12", 16", 18", 24", 30", 40"
#92188669



24" **\$37,800 MSRP**

Post Driver

May be used with Tilt-Attach, Manual sideshift, 24 GPM maximum flow, Quick change striker plate and collar assemblies

PD4800

#84258059 with
#84258064 8" Plate



\$14,100 MSRP



Excavator Attachments

Precision is the name of the game and the right tools determine the winner. Tough, reliable and exact - AMI Attachments make you one mean machine.

Thumb



Stick Pivot Thumb (shown)

3,000 lb - 6,000 lb - MSRP \$4,140
6,000 lb - 10,000 lb - MSRP \$4,775
10,000 lb - 12,000 lb - MSRP \$5,070
12,000 lb - 14,000 lb - MSRP \$5,985

Tilting Bucket

Boltless Design, Low Sound and a Nitrogen Gas Power Cell.



(prices listed at MSRP)

6,000-10,000 lb class excavators	10,000-12,000 lb class excavators
36" - \$7,070	36" - \$8,095
42" - \$7,185	42" - \$8,285
	48" - \$8,465

Couplers



6,000 lb - 10,000 lb Kubota mechanical wedge lock
MSRP \$2,050
6,000 lb - 10,000 lb Kubota Hydraulic wedge lock
MSRP \$4,370

AXXIS Tiltrotator

Fits KX057-5 Standard model, Pricing may vary depending on options added

5,000 lb - 10,000 lb
MSRP \$43,915

10,000 lb - 14,000 lb
MSRP \$45,295



AMI AXXIS Tiltrotator: Offering the largest tilt range available and the most compact design in the industry, the AMI AXXIS Tiltrotator - Powered by NOX, puts a new spin on productivity. The AXXIS Tiltrotator provides unparalleled dexterity for bucket movement that increases jobsite production with less machine repositioning and less support staff required.

 **MADE IN CANADA**



4-IN-1 Jawbone Bucket

When multi-tasking is a must, the AMI Attachments Jawbone 4-in-1 Excavator Bucket responds with a multipurpose design that digs, grades, grips and clamshells. Handlelogs & rocks, or dig and grade easily, a great tool to enhance & compliment your excavator.



24" 6,000 lb - 12,000 lb - MSRP \$18,906

12,000 lb - 14,000 lb - MSRP \$19,601

14,000 lb - 24,000 lb - MSRP \$21,087

Grading Beams

Make levelling sites after digging a breeze. Available in 72", 84" or 96" widths. When used in conjunction with the AMI AXXIS Tiltrotator, you can achieve greater precision with less repositioning, making you more efficient on the job site.



60" - 6,000 lb - 14,000 lb - MSRP \$6,900

72" - 14,000 lb - 24,000 lb - MSRP \$8,606

Excavator to Skidsteer Adaptor

The AMI Skidsteer Adapter offers the flexibility and convenience of using skidsteer attachments on your excavator.

Starting at \$4,931 (Rated at 5,500 lbs). (Weight rating & price varies depending on weight of excavator)



Graptor Bucket - Powered by RAMCAM

When you need to pick up large, heavy objects, grab bucketfuls of debris or demolish a building, discover a new reality on grip with AMI Attachments' Graptor® Powered by RAMCAM®. The built-in actuator thumb gives operators improved flexibility and precision by maintaining constant grip on the load throughout the bucket's entire rotation. The actuator produces up to 64,000 foot-pounds of holding strength at 3,000 psi. A powerful tool that keeps a tight handle on heavy bulky loads.



14,000 lb - 24,000 lb

- 24" - MSRP \$23,318

- 36" - MSRP \$24,131

Looking for something in particular? Feel free to give us a call to chat about attachments. We can get slab buckets, cable buckets, skeleton buckets, v-bottom buckets & many more! CALL TODAY.

*Products/features may not be exactly as shown.

Excavator Attachments



Rototilt's tiltrotator is shifting the boundaries of what can be accomplished with an excavator. Rototilt's tiltrotators are packed with technical innovations, all working to transform your excavator into an efficient tool carrier. This opens doors for you as a machine operator, enabling you to take on more types of jobs.



R2 MSRP \$24,000

The Rototilt® R2 tiltrotator is designed for smaller excavators weighing between 3-6.5 tonnes. The tiltrotator's design is based on the same concept as our larger models with an integrated swivel. This means benefits from reduced hose routing and increased flow capacity. (ICS control)



R3 MSRP \$29,500

Meet the Rototilt® R3, specially developed for excavators weighing between 6-12 tonnes and to cope with breakout torques of 85 kNm. The Rototilt® R3 is tailored for compact machines – an increasingly popular segment of the excavator market. (ICS control)

Continuous Rotation 40° Side Tilt Manual Coupler for Excavators.

R2 is suitable for Kubota KX040, KX057, U55.

R3 Model requires the larger KX080.

* Plus PDI & Freight



Stewart's Equipment offers excellent parts & service support to keep your Excavator running like NEW!

Ask about how we can help you get the most from your investments.

Soil Compaction



Vibratory plates from weber mt are designed to take tough site conditions in their stride. Their fully closed v-belt guards meet today's safety requirements. They are precision-manufactured in Germany, using high-quality steel and modern welding robots to ensure optimum quality at all times.

CF 2II - Forward Plate

The forward travel vibratory plate CF2 II is used in landscape applications for the compaction of sand/gravel, block and asphalt pavements and no-slump concrete. The compact design enables effective work in small areas.

- 3,372 lbs centrifugal force
- 183 lb machine
- Base plate width: 18"
- Honda GX160 engine
- Folding, low-vibration guide bar.



\$4,100 MSRP

VPR450 - Paver Roller

This machine has been designed specifically for the challenging task of compacting slabs, pavers, natural stone and porcelain. This smooth mode of operation embeds the product while properly, preventing shifting, cracking and chipping as well as minimizing dust.

- 1,798 lbs centrifugal force
- 238 lb machine
- Honda GX160 gas engine



\$6,500 MSRP

SRV 590 -II HD - Rammer

The SRV 590 is the solution of choice when it comes to compacting soil for the construction of channels and pipes, for gardening and landscaping purposes and during road construction. Its low weight of 137 lbs. makes the unit easier to transport and handle during work on the construction site.

- 11" Shoe Width
- 137 lb Machine
- Low Fuel Consumption
- Engine: Honda GXR 120



\$5,900 MSRP

*Products/features may not be exactly as shown.

STIHL

STIHL CUT-OFF MACHINES FOR EXTREMELY HARD MATERIALS

Concrete, stone, asphalt or structural steel: with our heavy-duty cut-off machines you can cut even the hardest materials precisely and reliably on construction sites, during roadworks, and during rescue operations.

TS 420

- 66.7 cc
- 21.4lbs
- Cutting Wheel: 14"
- Anti-vibration system
- Reduced-emission engine technology



MSRP \$1,629.⁹⁹

TS 500i

- 72.0cc
- 22.5lbs
- Cutting wheel: 14"
- Stihl ElastoStart
- Low-emission engine technology



MSRP \$1,929.⁹⁹

TS 700

- 98.5cc
- 25.8lbs
- Cutting wheel: 14"
- Stihl ElastoStart
- Reduced-emission engine technology



MSRP \$2,199.⁹⁹

TSA 230

- world's first battery-powered cut-off machine.
- 8.6lbs
- Cutting wheel: 9"
- 36V STIHL EC-Motor



MSRP \$599.⁹⁹

RB 600

- 208cc
- 3,200 psi
- High Pressure Hose - 40'
- Easy Start - Unit can be started without releasing pressure



MSRP \$1,429.⁹⁹

*Products/features may not be exactly as shown.
Prices do not include: setup, PDI or freight.

Generators

EU2200iTC

MSRP \$1,499

- 2,200 watts of Honda inverter 120V AC power
- 57dB(A) at rated load 48dB(A) at 25% load
- Honda GXR120, OHC, 4-stroke commercial series engine.

HONDA



EU3200iC

MSRP \$3,309

- 3,200 watts of Honda inverter 120V AC power
- High capacity 120/240V AC twist lock
- Great for RV's, Camping, and Outdoor Adventures



EU7000isCTI

MSRP \$5,819

- 7,000 watts of Honda inverter 120V AC power
- Electronic Fuel Injection (reduces maintenance associated with carburetors and fuel storage issues)
- Large capacity fuel tank, 19.2 L



Water Pumps

WH15XT2C

MSRP \$939

- 40 mm (1.5 in) suction and discharge ports
- Moves up to 400 litres (88 Imp. gal.) per minute
- High pressure pump that performs a multitude of duties.



WB20XT4C

MSRP \$615

- 50 mm (2 in) suction and discharge ports
- Moves up to 620 litres (136 Imp. gal.) per minute
- Commercial-grade engine, high efficiency and heavy-duty cast iron impeller.



Trash Pumps

WT30XK4C

MSRP \$2,269

- capable of pumping water containing rocks and debris
- Moves up to 1,210 litres (266 Imp. gal.) per minute through 80 mm (3 in) suction and discharge ports
- Conical cast iron impeller.



More Models Available!

*Products/features may not be exactly as shown.
Prices do not include: setup, PDI or freight.



K-Haul Trailers

When it comes to getting your equipment from point A to B, Kubota has the trailers that get it done right. We offer high-quality utility trailers, landscape trailers, float trailers, and dump trailers ideal for professional and residential applications. Best of all, our trailers are built to last, so they can serve you for years to come.

KHUT2-3.5WL

- 3,500lb axle
- 16 ¹/₄" sides, rear mesh gate
- 72" wide x 12' long
- Steel construction
- Aluminum rims
- LED lighting package
- Toolbox, Spare tire
- Powder coated
- Adjustable ball hitch, 2" ball



\$6,019.³²

Finance/Lease:

\$1,504.83 Down (+ HST)

\$376.21 per mo. (+ HST)

@ 0% for 12 mos.

KHL20-7WL

- 2 x 3,500lb axle
- EZ lube hubs
- Electric brakes
- 82" wide x 20' long
- 2 ⁵/₁₆" adjustable hitch
- Split rear mesh,
- Spring assist ramp
- Spare tire, Toolbox
- LED lighting package
- Steel construction,
- Powder coated
- GVWR3200kg Payload 2227kg



\$11,103.⁴⁰

Finance/Lease:

\$2,775.85 Down (+ HST)

\$693.96 per mo. (+ HST)

@ 0% for 12 mos.

KHD14-14WL

- 2 x 7,000lb axle
- 98" wide x 14' long
- 20" sides,
- Steel construction
- Aluminum rims
- LED lighting package
- Toolbox
- Powder coated
- Spare tire
- Adjustable ball hitch, 2" ball



\$19,481.⁴²

Finance/Lease:

\$4,541.42 Down (+ HST)

\$1,245 per mo. (+ HST)

@ 0% for 12 mos.

Licensing extra on all trailers

*Products/features may not be exactly as shown.
ALL FINANCING OAC. Limited time offer.



Used Equipment

New equipment is not always in the budget. At Stewart's Equipment we have a large offering of quality used equipment, skidsteers, excavators, tractors, attachments and more! Select a Kubota quality pre-owned piece of equipment and qualify for a rate as low as 4.99%

Kubota SVL65-2

\$67,900

hours showing: 249, cab with heat and air, hydraulic quick attach, 68" low profile bucket, high flow, rubber tracks, Unit is located at Stewart's Equipment in Erin.

Stock # U29200



Kubota SVL75-2

\$53,500

hours showing: 2637, cab with heat, rubber tracks, hydraulic quick attach, low profile bucket, front auxiliary hydraulics. Unit is located at Stewart's Equipment in Erin.

Stock # U28279



Kubota SSV65P

\$42,900

hours showing: 1069.6, year: 2018, cab with heat and air, pilot controls, hydraulic quick coupler, 67" bucket, Unit is located at Stewart's Equipment in Erin.

Stock # U28439



Kubota U35-4G

\$48,900

hours showing: 939.9, rubber track machine, cab with heat and air, diesel, hydraulic thumb, tooth bucket, Unit is located at Stewart's Equipment in Erin.

Stock # U29171



ASK ABOUT OUR USED FINANCING OPTIONS

**Products/features may not be exactly as shown.
ALL FINANCING OAC. Limited time offer.*

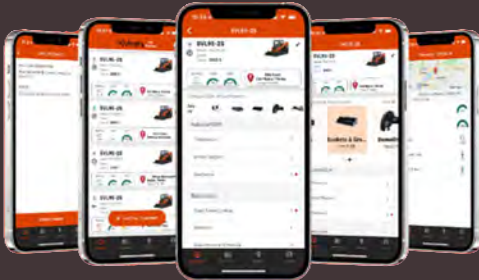


Stewart's Equipment

Erin 519-833-9616
Cookstown 705-458-0871
Stayner 705-428-3132

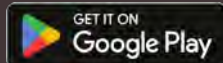
STEWARTSEQUIP.COM

DOWNLOAD THE myKubota APP



Supported Products

- Tractors
- Compact Track Loaders
- Skid Steers
- Wheel Loaders
- RTV'S
- Excavators



*For commercial use only. Offer subject to credit qualification and approval by CNH Industrial Capital Canada Ltd. See your New Holland dealer for details and eligibility requirements. CNH Industrial Capital Canada Ltd. standard terms and conditions will apply. Depending on model, a down payment may be required. Offer good through March 31st, 2025, at participating New Holland dealers in Canada. Offer subject to change. Taxes, freight, set-up, delivery, additional options or attachments not included in price. © 2025CNH Industrial Capital America LLC. All rights reserved. New Holland Agriculture is a trademark registered in the United States and many other countries, owned by or licensed to CNH Industrial N.V., its subsidiaries or affiliates. CNH Industrial Capital and New Holland Construction are trademarks in the United States and many other countries, owned by or licensed to CNH Industrial N.V., its subsidiaries or affiliates.

- OAC; on approved credit - variable terms • May require a downpayment • Units may not be exactly as shown • Applicable taxes extra • Limited quantities

We have done our best to ensure accuracy however, in the event of a typographical error, advertising goods or services at an incorrect price, goods or services may not be sold. Advertising is merely an offer to sell, and may be withdrawn at any time.